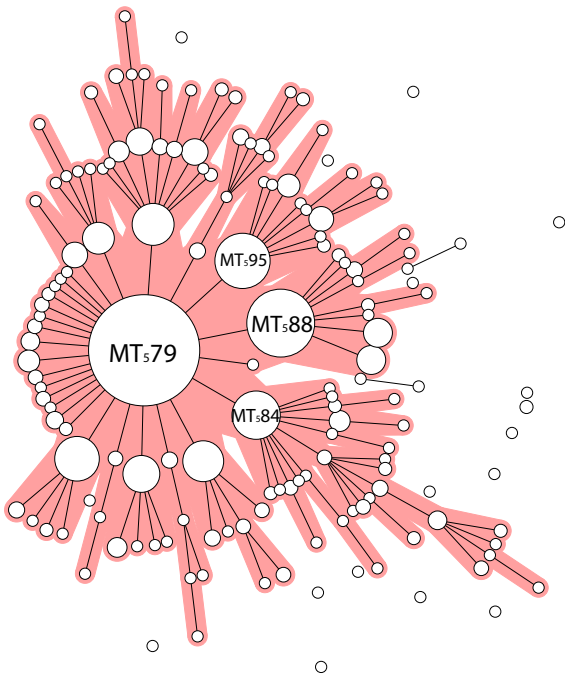
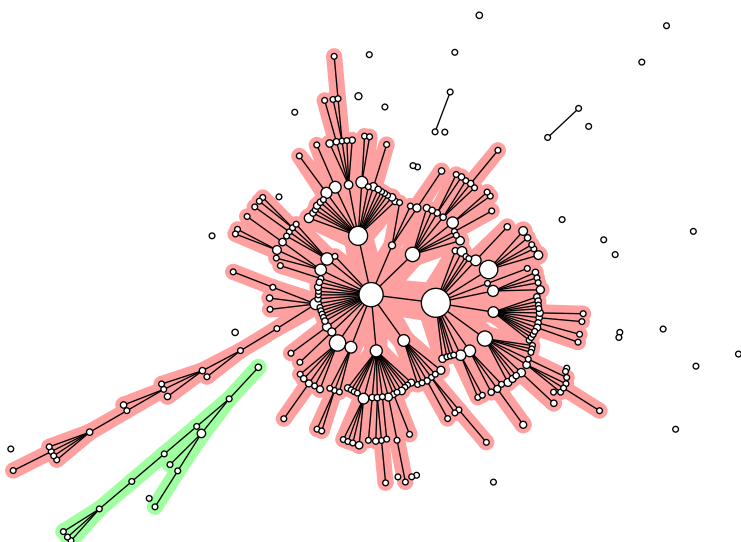


Minimum spanning tree of MLVA of 1,015 *H. influenzae* isolates using 4 VNTR loci. Only single locus variants are connected by lines. A few dominant MLVA4 types are indicated by MT numbers. MLVA complexes are indicated by colored halos.



Minimum spanning tree of MLVA of 1,015 *H. influenzae* isolates using 5 VNTR loci. Only single locus variants are connected by lines. A few dominant MLVA5 types are indicated by MT numbers. MLVA complexes are indicated by colored halos.



Minimum spanning tree of MLVA of 1,015 *H. influenzae* isolates using 6 VNTR loci. Only single locus variants are connected by lines. No MLVA types are assigned when 6 VNTR loci are used. MLVA complexes are indicated by colored halos.